

# Smart relays

## Zelio Logic

Step into an intuitive *world!*



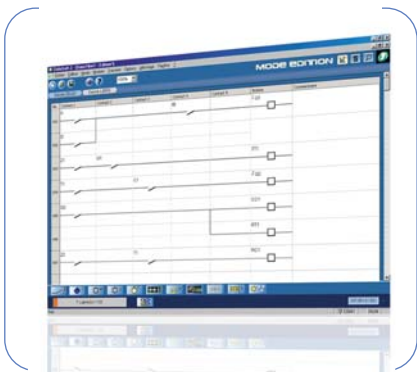


How do you achieve in a *simple* and *user-friendly* manner the development of an application you have in mind?

With **Zelio soft 2** software, picture the application you have in mind and programming will be *second nature*.

### Quick programming ...

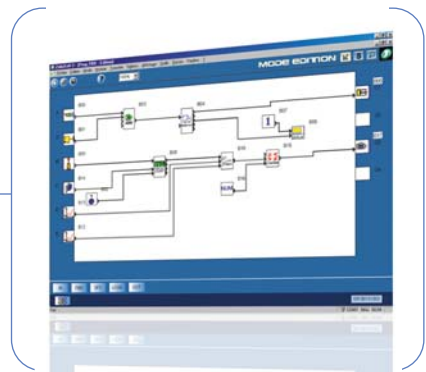
From an intuitive interface, create and modify your programmes in record time using an extensive number of “drag and drop” pre-programmed functions. Whatever your preference, **Zelio Soft 2** speaks your language:



**LADDER language:** simplicity of programming assured by the universality of the **contact language** 12 pre-programmed functions



Choice of language



**FBD language:** programming **flexibility** and **high capacity** of processing up to 200 function blocks, which include: 32 pre-programmed functions



...and *safe!*

- **Coherence test:** at the slightest input error, Zelio Soft turns red and precisely locates the problem.
- **Simulation and monitoring modes:** test the programme in real-time, with or without the smart relay connected to the PC.
- **Supervision window:** enables viewing the I/O states of the smart relay in your application environment (diagram or image).

Zelio Soft 2 software and memory	Multilingual programming software	Connecting cables		Wireless connection	Back-up memory
<b>Description</b>	PC CD-ROM (Windows 98, NT, 2000, XP) <sup>(1)</sup>	Serial PC/Smart relay	USB PC/Smart relay	Bluetooth interface	EEPROM
<b>References</b>	SR2SFT01	SR2CBL01	SR2USB01	SR2BTC01	SR2MEM02

<sup>(1)</sup> CD-ROM including Zelio Soft programming software, an application library, a self-training manual, installation instructions and a user's manual.

it



You need to *share information*, and *keep in contact* with your installations

The *simple* and *economical* communication solutions of Zelio Logic live up to your expectations:



**+** Network communication extension modules:

- Easily connect automation system equipment such as displays or PLCs...
- Easily modify your automation system



**+** Bluetooth® wireless connection interface

- Gain freedom of movement!  
Use a wireless connection between your smart relay and PC for programming, simulating, loading, modifying your programme and supervising your installation.



**+** Modem communication interface

- Monitor and control your installations remotely!
- Avoid unnecessary on-site visits: communicate with Zelio Logic using your mobile phone
  - Define your maintenance priorities
  - Perform pre-diagnostics
  - Manage your maintenance personnel



Interface, modems, Zelio Logic Alarm software	Communication interface	Modems <sup>(1)</sup>		Alarm management software
Supply voltage	12...24 VDC	12...24 VDC	12...24 VDC	-
Description	-	RTC Modem	GSM Modem	PC CD-ROM (Windows 98, NT, 2000, XP)
References	SR2COM01	SR2MOD01	SR2MOD02	SR2SFT02

<sup>(1)</sup> Must be used in conjunction with communication interface SR2COM01.



You seek an *optimised* solution for your simple applications comprising *10 to 20 I/O*

With **Zelio Logic Compact**, *optimise* the cost of the solution according to your application requirements due to the various versions:

- with or without display and buttons
- with or without clock



3 monobloc models with 10, 12 or 20 I/O: versions with or without display and buttons.

Compact smart relays							
AC supply voltage	24 VAC		100...240 VAC				
Number of inputs/outputs	12	20	10	12	20	20	
Number of inputs	Discrete inputs		8	12	6	8	12
Number of outputs	4 relay		8 relay	4 relay	4 relay	8 relay	8 relay
Clock	yes		yes	no	yes	no	yes
References	with display	SR2B121B	SR2B201B	SR2A101FU <sup>(1)</sup>	SR2B121FU	SR2A201FU <sup>(1)</sup>	SR2B201FU
	without display	SR2E121B	SR2E201B	SR2D101FU <sup>(1)</sup>	SR2E121FU	SR2D201FU <sup>(1)</sup>	SR2E201FU
DC supply voltage	12 VDC		24 VDC				
Number of inputs/outputs	12		20	10	12	20	20
Number of inputs	Discrete inputs		8	12	6	8	12
	including 0-10 V analogue inputs		4	6	-	4	6
Nombre de sorties	4 relay		8 relay	4 relay	4	8 relay	8
Clock	yes		yes	no	yes	no	yes
References	with display	SR2B121JD	SR2B201JD	SR2A101BD <sup>(1)</sup>	SR2B12•BD <sup>(2)</sup>	SR2A201BD <sup>(1)</sup>	SR2B20•BD <sup>(2)</sup>
	without display	-	-	SR2D101BD <sup>(1)</sup>	SR2E121BD	SR2D201BD <sup>(1)</sup>	SR2E201BD

<sup>(1)</sup> Programming on smart relay in LADDER language only.

<sup>(2)</sup> Replace the • by number 1 to order a smart relay with relay output or by 2 for a smart relay with transistor output (Example: SR2B121BD).

You seek a solution for *demanding* applications comprising up to **40 I/O**



Communication extension modules  
 ■ Modbus and Ethernet

Extension modules  
 ■ Discrete: 6, 10, 14 I/O,  
 ■ Analogue: 4 I/O

**Zelio Logic Modular** provides you with *performance* and opportunities for future *development*.

Simply add communication and I/O extension modules on the Zelio Logic Modular bases for:

- adding the Modbus (slave) or Ethernet (server) communication network
- adding additional analogue inputs with better resolution (10 bits) in addition to those of the base
- increasing the number of discrete inputs/outputs at very little cost (up to 40 I/O)

2 bases  
 ■ 10 and 26 I/O extendable to 40 I/O



Modular smart relays*	With display						
	24 VAC		100...240 VAC		12 VDC	24 VDC	
Supply voltage	24 VAC		100...240 VAC		12 VDC	24 VDC	
Number of inputs/outputs	10	26	10	26	26	10	26
Number of inputs	Discrete inputs		Discrete inputs		Discrete inputs	Discrete inputs	
	6	16	6	16	16	6	16
	including 0-10 V analogue inputs		including 0-10 V analogue inputs		including 0-10 V analogue inputs	including 0-10 V analogue inputs	
	-	-	-	-	6	4	6
Number of outputs	4 relay	10 relay	4 relay	10 relay	10 relay	4	10
Clock	yes	yes	yes	yes	yes	yes	yes
References	SR3B101B	SR3B261B	SR3B101FU	SR3B261FU	SR3B261JD	SR3B10•BD <sup>(1)</sup>	SR3B26•BD <sup>(1)</sup>

Extension modules for Zelio Logic SR3B••••• <sup>(2)</sup>	Communication		Discrete Inputs/Outputs			Analogue Inputs/Outputs	
	Modbus	Ethernet					
Application	Modbus	Ethernet	-			-	
Number of inputs/outputs	-	-	6	10	14	4	
Number of inputs	Discrete		4 discrete	6 discrete	8 discrete	2 (0...10 V, 0...20mA, PT100)	
Number of outputs	-		2 relay	4 relay	6 relay	2 (0...10 V)	
References	24 VAC		SR3XT61B	SR3XT101B	SR3XT141B	-	
	100...240 VAC		SR3XT61FU	SR3XT101FU	SR3XT141FU	-	
	12 VDC		SR3XT61JD	SR3XT101JD	SR3XT141JD	-	
	24 VDC		SR3MBU01BD	SR3NET01BD	SR3XT61BD	SR3XT101BD	SR3XT141BD
						SR3XT43BD	

<sup>(1)</sup> The modular base can be fitted with one I/O extension module. The 24 VDC modular base can be fitted with one communication module and/or one I/O extension module.  
<sup>(2)</sup> Replace the • by number 1 to order a smart relay with relay output or by 2 for a smart relay with transistor output (Example:SR3B101BD)  
<sup>(3)</sup> The power supply of the extension modules is provided via the Zelio Logic modular relays.

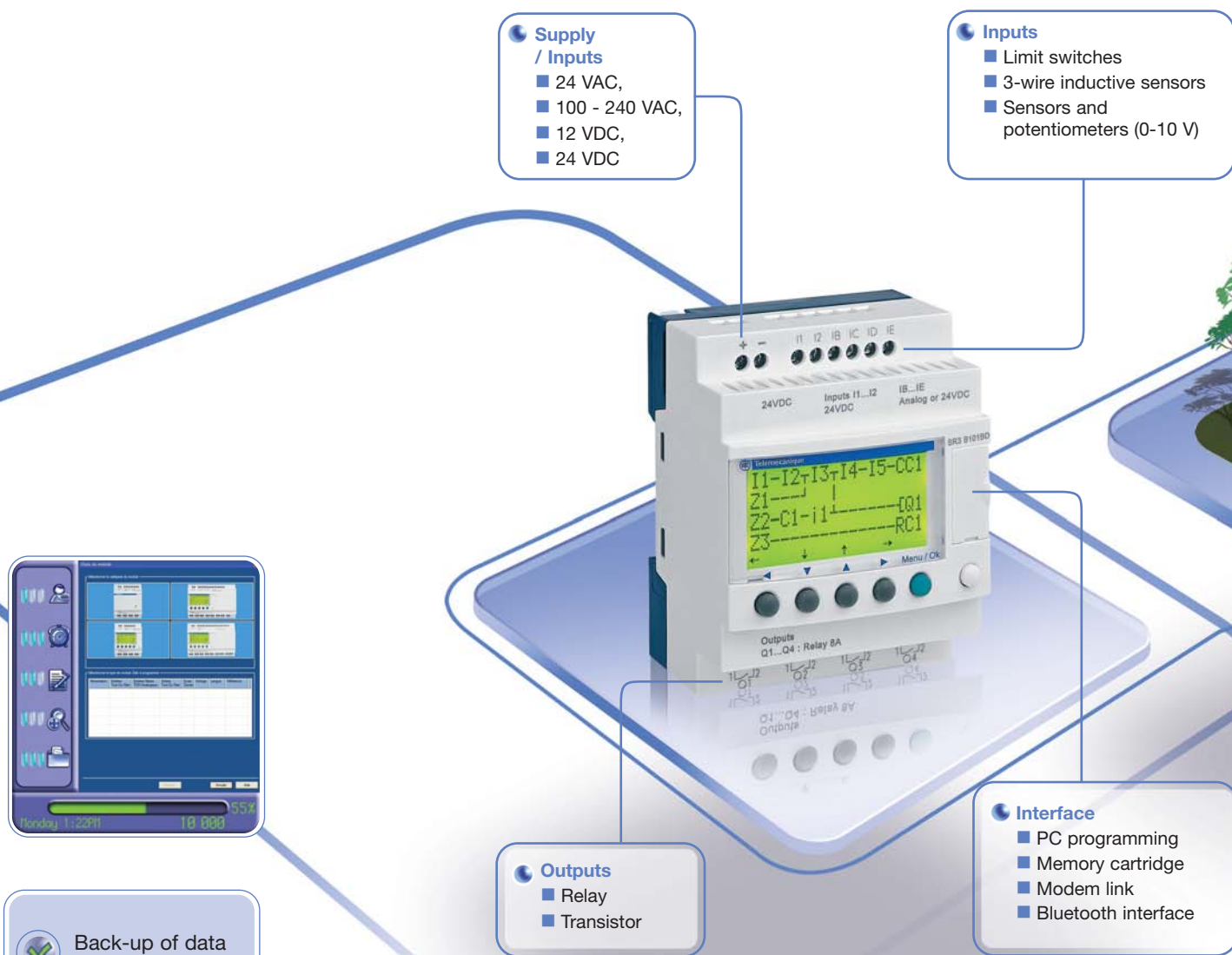
## Simply Smart !

Leveraging  
**ingenuity**  
and intelligence  
for **ease of use**

## Simply select your Zelio Logic !

Designed for the management of simple automation systems comprising 10 to 40 I/O, Zelio Logic smart relays, with their unique combination of value for money and ease of use, provide a real alternative to solutions based on cabled logic or specific cards.

**Simple** to select, install and programme, Zelio Logic is suitable for all your applications. **Flexible**, it offers you the choice of 2 ranges - Compact versions with fixed configurations, and Modular versions which allow the use of extension modules - and 2 programming languages (FBD or LADDER).



## Optimise your installation time

■ Simple to assemble

Add extension modules on the modular range by **simple clipping-on**.

■ Simple to mount

Fixing **without accessories**: DIN rail or panel mounting (retractable fixing lugs).

■ Simple to integrate

Extreme **compactness** for reducing the size of your enclosures (H 90 x W 71.2 x D 59 mm for a 12 I/O model).

## Wherever you are, *communicate* easily!



Open, Zelio Logic enables you to monitor and control your installations in *any* situation:

■ From anywhere using modem (analogue or GSM) solution  
Monitor and control remotely your unmanned installations

■ Locally using the Ethernet network...  
A single universal network for connecting your automation system equipment and distributing your Internet connection points

■ Up to 10 metres with Zelio Soft 2 and the Bluetooth® wireless connection  
An easy connection even in the most inaccessible places

■ Up to 3 metres with Zelio Soft 2 and PC connecting cables:  
Programme, simulate, load and modify your programme and supervise your installation

■ Using the LCD display on the smart relay  
An extra large display for comfortably viewing information, simple setting-up and programme modifications.

Picture your application, programming will be *second nature!*

In order to continually provide you with more user-friendliness and performance, Zelio Soft 2 is enhanced with new functions... Test it yourself on [www.telemecanique.com](http://www.telemecanique.com)



## The efficiency of Telemecanique branded *solutions*

Used in combination, Telemecanique products provide quality solutions, meeting all your **Automation** and **Control** applications requirements.



Find out more about Zelio Logic for your applications with the Discovery packs:

- pack comprising 1 product,  
1 connecting cable and software CD.
- available in 24 VDC, 100...240 VAC

## A worldwide presence

### Constantly available

- More than 5 000 points of sale in 130 countries.
- You can be sure to find the range of products that are right for you and which complies fully with the standards in the country where they are used.

### Technical assistance wherever you are

- Our technicians are at your disposal to assist you in finding the optimum solution for your particular needs.
- Schneider Electric provides you with all necessary technical assistance, throughout the world.

[www.telemecanique.com](http://www.telemecanique.com)

### Schneider Electric Industries S.A.S.

Head Office  
89, bd Franklin Roosevelt  
92504 Rueil-Malmaison  
FRANCE

[www.schneider-electric.com](http://www.schneider-electric.com)  
[www.telemecanique.com](http://www.telemecanique.com)

Due to evolution of standards and equipment, the characteristics indicated in texts and images of this document do not constitute a commitment on our part without confirmation.

Design: 3000 NR  
Photos: Schneider Electric

*Simply Smart !*